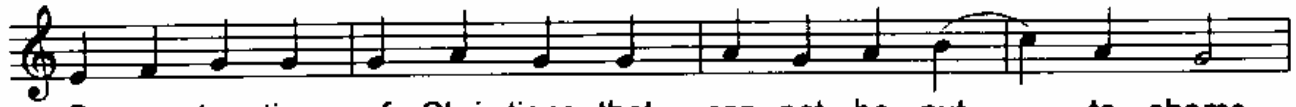


KONTAKION

Tone 2



O pro-tec-tion of Chris-tians that can-not be put to shame,



me-di-a-tion un-to the Cre-a-tor most con-stant,



O des-pise not the sup-pli-ant voi-ces of those who have sinned;



but be thou quick, O good one, to come un-to our aid, who in



faith cry un-to thee: Has-ten to in-ter-ces-



sion, and speed thou to make sup-pli-ca-tion, thou who dost e-



ver pro-tect, O The-o-to-kos, them that ho-nor thee.